



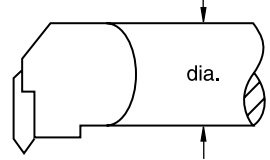
TOP NOTCH

A4

A3

A2
GROOVING & CUT-OFF TOOLS

A two-digit number that indicates the bar diameter in 1/16-inch increments.

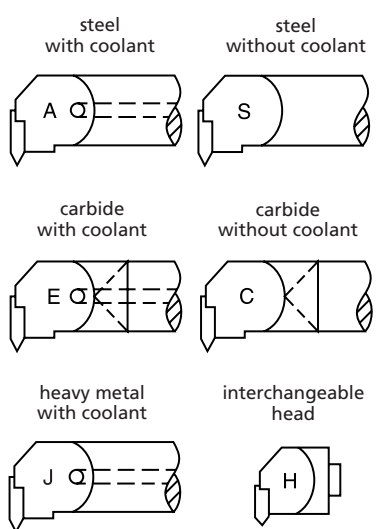


2. Bar Diameter

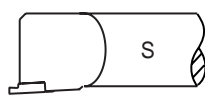
S

32

1. Bar Type



end mount



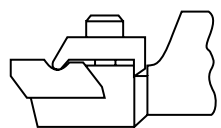
straight mount

4. Insert Location

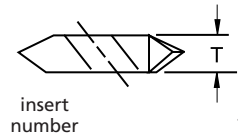
N

E

3. Insert Holding Method



N* – TOP NOTCH



insert number

T

1	.100
2	.150
3	.195
4	.255
5	.380
6	.383
8	.438

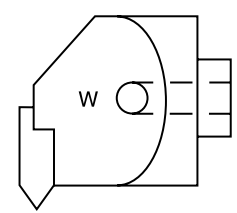
6. Insert Size

3

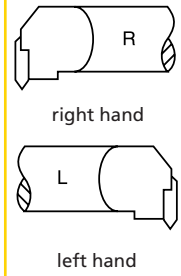
W

7. Additional Information

through-coolant interchangeable head



5. Hand of Bar



right hand

left hand

*Kennametal standard only.